

# Montgomery County Profile

Alabama Department of Labor  
Labor Market Information Division

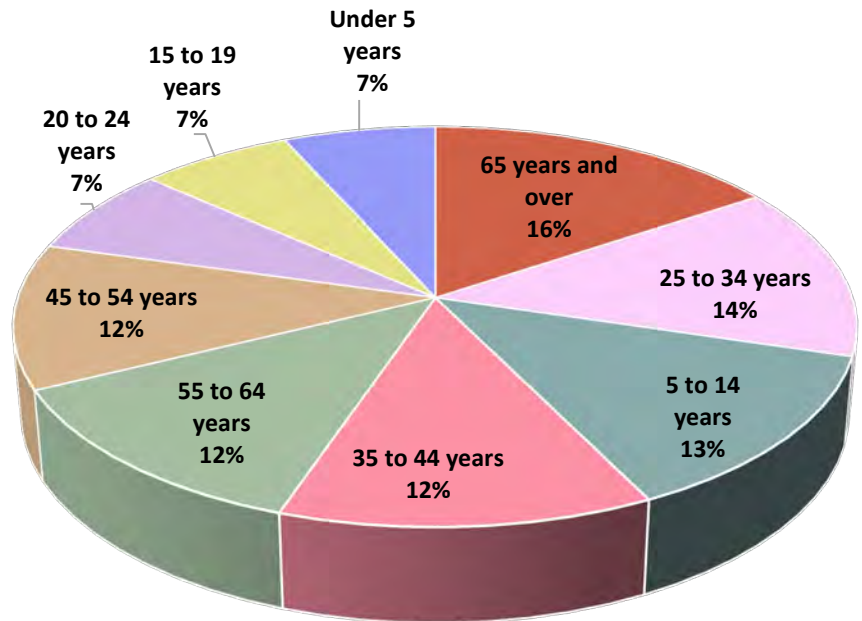
# Demographics

## American Community Survey Average Population Estimates for 2018-2022

Age	Estimate
Under 5 years	15,285
5 to 14 years	29,693
15 to 19 years	15,404
20 to 24 years	16,308
25 to 34 years	32,020
35 to 44 years	28,626
45 to 54 years	26,720
55 to 64 years	28,441
65 and older	35,635

*Total Population*  
**228,132**

*Population By Age Group:*



# Demographics

## American Community Survey Average Population Estimates for 2018-2022

School Enrollment	Estimate
Population 3 years and over enrolled in school	58,594
Nursery school, preschool	3,676
Kindergarten	2,899
Elementary school (grades 1-8)	23,644
High school (grades 9-12)	12,050
College or graduate school	16,325
Educational Attainment	Estimate
Population 25 years and over	151,442
Less than 9 <sup>th</sup> grade	12,791
9 <sup>th</sup> to 12 <sup>th</sup> grade, no diploma	12,791
High school graduate (includes equivalency)	38,816
Some college, no degree	31,896
Associate's degree	11,506
Bachelor's degree	29,456
Graduate or professional degree	21,546

Source: U.S. Census Bureau, 2018-2022 5-Year American Community Survey Table DP02: Selected Social Characteristics in the United States

# Unemployment Data

## November 2023 Unemployment & Underemployment Data

County	Civilian Labor Force	Employment	Unemployment	Unemployment Rate	Under-Employment	Available Labor Pool
Autauga	27,109	26,516	593	2.2%	5,277	5,870
Dallas	13,711	12,964	747	5.4%	4,317	5,064
Elmore	38,654	37,832	822	2.1%	6,923	7,745
Lowndes	3,555	3,381	174	4.9%	960	1,134
<b>Montgomery</b>	<b>108,087</b>	<b>105,103</b>	<b>2,984</b>	<b>2.8%</b>	<b>23,123</b>	<b>26,107</b>
Perry	3,079	2,924	155	5.0%	974	1,129

**Unemployment + Underemployment = Potential Available Labor Pool**

Source: LAUS data, County Unemployment Rates, Unemployment Data for Labor Force, Employment, Unemployment, and Unemployment Rate Data. Underemployment in Alabama WIA Areas, Published September 2023, CBER @ UA, Underemployment and Available Labor Pool Data.

# Unemployment Data

## Initial Claims by Occupation 2023, Annual

Occupation	Number Unemployed	Occupation	Number Unemployed
Customer Service Representatives	1,083	Packers and Packagers	96
Stockers and Order Fillers	292	Inspectors, Testers, Sorters, Samplers, and Weighers	93
Team Assemblers	287	Fast Food and Counter Workers	92
Cashiers	267	Packaging and Filling Machine Operators and Tenders	81
Helpers--Production Workers	189	Security Guards	77
Retail Salespersons	168	Cooks, Restaurant	77
Industrial Truck and Tractor Operators	158	Supervisors of Retail Sales Workers	77
Heavy and Tractor-Trailer Truck Drivers	156	Nursing Assistants	74
Laborers and Freight, Stock, and Material Movers	146	Maintenance and Repair Workers	73
General and Operations Managers	133	Light Truck Drivers	69
Waiters and Waitresses	126	Food Service Managers	65
Maids and Housekeeping Cleaners	117	Sales Managers	64
Medical Assistants	104	Office Clerks, General	64
Production Workers, All Other	101	Personal Care Aides	58
Janitors and Cleaners, Except Maids and Housekeeping Cleaners	98	Supervisors of Production and Operating Workers	55



Source: Unemployment Insurance Reports

# *Help Wanted OnLine*® Annual Job Postings

## 2023 Top Occupations with Most Ads Posted

Occupation	# of Ads	Occupation	# of Ads
Registered Nurses	1,511	Licensed Practical & Vocational Nurses	356
Retail Salespersons	947	Secretaries & Administrative Assistants, Except Legal, Medical, & Executive	340
Sales Reps, Wholesale & Manufacturing, Exc Technical & Scientific Products	818	Management Analysts	322
Supervisors of Retail Sales Workers	781	Janitors & Cleaners, Except Maids & Housekeeping Cleaners	313
Customer Service Representatives	725	Maids & Housekeeping Cleaners	309
Software Developers	685	Security Guards	296
Medical & Health Services Managers	602	Fast Food & Counter Workers	295
Maintenance & Repair Workers, General	590	Supervisors of Food Preparation & Serving Workers	285
Sales Managers	499	Hotel, Motel, & Resort Desk Clerks	258
Food Service Managers	474	Automotive Service Technicians & Mechanics	253
Laborers & Freight, Stock, & Material Movers, Hand	441	Computer User Support Specialists	233
General & Operations Managers	429	Cashiers	226
Heavy & Tractor-Trailer Truck Drivers	429	Accountants & Auditors	225
Waiters & Waitresses	418	Human Resources Specialists	219
Managers, All Other	403	Middle School Teachers, Except Special & Career/Technical Education	217



Source: The Conference Board-Burning Glass Help Wanted OnLine

# Expected Worker Shortfall

	2020-2030	2020-2035
Total Population Growth	1.0%	1.5%
Age 20-64 Population Growth	0.8%	1.2%
Nonagricultural Job Growth	6.4%	10.0%
Worker Shortfall	5.6%	8.9%
<b>Worker Shortfall</b>	<b>7,489</b>	<b>11,869</b>

Note: A negative Worker Shortfall indicates a projected surplus of workers versus available jobs.



Source: Center for Business and Economic Research (CBER), University of Alabama

# Occupational Wages

---

## Montgomery County Average Hourly Wage All Occupations

Entry	Median	Mean	Experienced
\$12.57	\$20.00	\$26.00	\$32.71

## Montgomery County Average Hourly Wage Manufacturing

Entry	Median	Mean	Experienced
\$15.29	\$23.24	\$25.39	\$30.44

Source: Alabama Department of Labor, Labor Market Information Division in cooperation with the U.S. Bureau of Labor Statistics. The data is based on the 2022 release of the Occupational Employment Statistics report, employment and wage estimate file. Wage data has been aged using the latest quarterly Employment Cost Index (ECI) factors. 'NA' indicates data not available for publication.



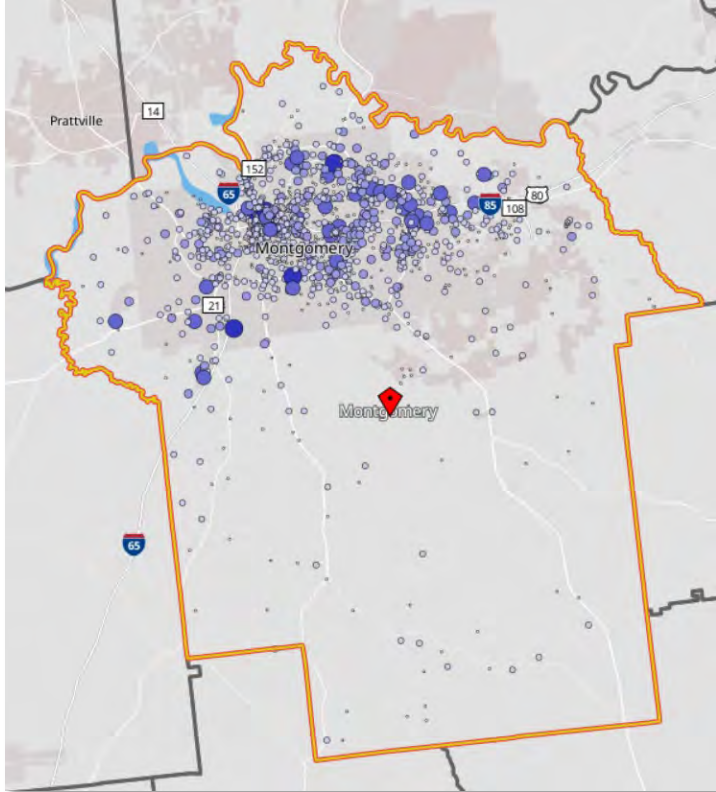
# Occupational Wages

## Annual Salary Area Comparison

	Entry	Median	Mean	Experienced
<b>Alabama</b>				
Total	\$27,775	\$47,005	\$61,395	\$78,205
Manufacturing	\$30,764	\$45,305	\$55,077	\$67,233
<b>Montgomery County</b>				
Total	\$26,136	\$41,592	\$54,070	\$68,038
Manufacturing	\$31,819	\$48,354	\$52,817	\$63,317
<b>Elmore County</b>				
Total	\$23,587	\$35,904	\$44,909	\$55,571
Manufacturing	\$32,469	\$50,853	\$61,560	\$76,106
<b>Jefferson County</b>				
Total	\$27,585	\$45,980	\$59,514	\$75,480
Manufacturing	\$33,496	\$48,103	\$55,159	\$65,990

Source: Alabama Department of Labor, Labor Market Information Division in cooperation with the U.S. Bureau of Labor Statistics. The data is based on the 2022 release of the Occupational Employment Statistics report, employment and wage estimate file. Wage data has been aged using the latest quarterly Employment Cost Index (ECI) factors. 'NA' indicates data not available for publication.

# 2021 Workforce Characteristics

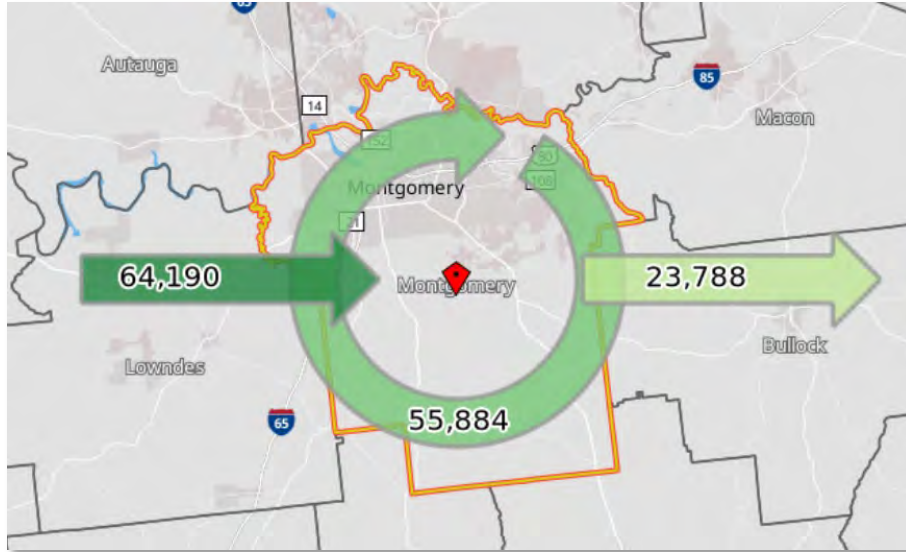


Jobs by Worker Age	Count	Share
Age 29 or younger	25,609	21.3%
Age 30 to 54	65,411	54.5%
Age 55 or older	29,054	24.2%
Jobs by Worker Educational Attainment	Count	Share
Less than high school	12,369	10.3%
High school or equivalent, no college	27,460	22.9%
Some college or Associate degree	31,005	25.8%
Bachelor's degree or advanced degree	23,631	19.7%
Educational attainment not available (workers aged 29 or younger)	25,609	21.3%
Jobs by Worker Sex	Count	Share
Male	57,251	47.7%
Female	62,823	52.3%
Jobs by Earnings	Count	Share
\$1,250 per month or less	18,465	15.4%
\$1,251 to \$3,333 per month	39,911	33.2%
More than \$3,333 per month	61,698	51.4%

Source: U.S. Census Bureau, OnTheMap Application and LEHD Origin-Destination Employment Statistics in Partnership with the Alabama Department of Labor, Labor Market Information Division.

# 2021 Commuting Patterns

## Labor Force Characteristics



Outflow Job Characteristics	Count	Share
External Jobs Filled by Residents	23,788	100.0%
Workers Aged 29 or younger	6,937	29.2%
Workers Aged 30 to 54	12,229	51.4%
Workers Aged 55 or older	4,622	19.4%
Workers Earning \$1,250 per month or less	5,749	24.2%
Workers Earning \$1,251 to \$3,333 per month	8,402	35.3%
Workers Earning More than \$3,333 per month	9,637	40.5%
Workers in the "Goods Producing" Industry Class	3,061	12.9%
Workers in the "Trade, Transportation, and Utilities" Industry Class	6,592	27.7%
Workers in the "All Other Services" Industry Class	14,135	59.4%

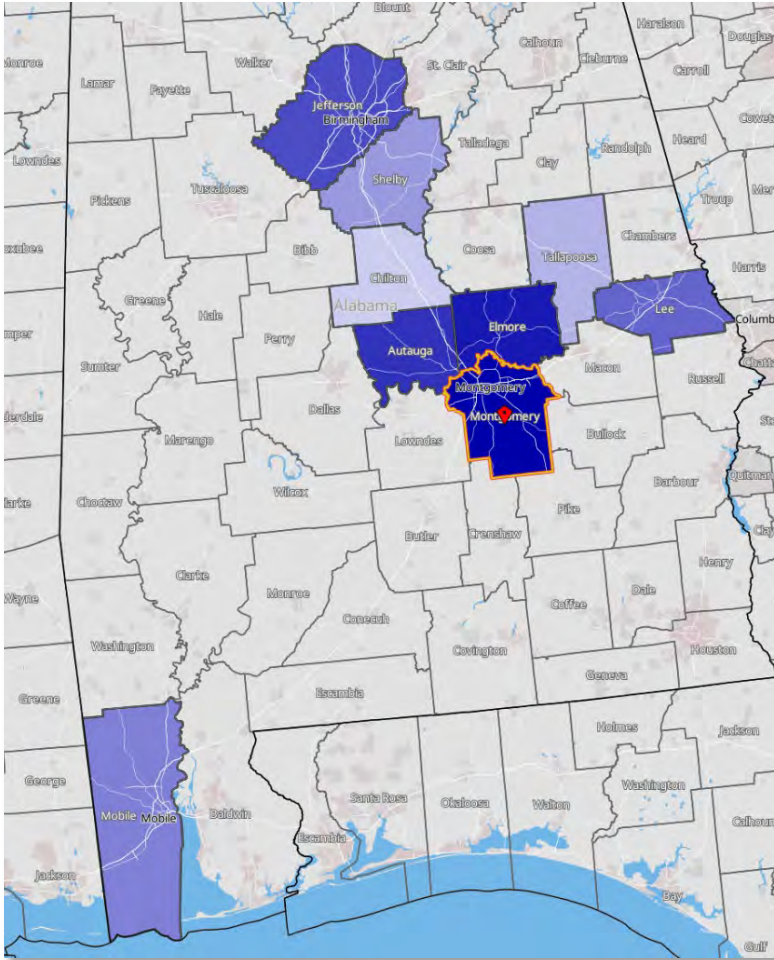
**Live and Work  
in the County**  
**70.1%**

**Live in the County  
but Work Elsewhere**  
**29.9%**

Source: U.S. Census Bureau, OnTheMap Application and LEHD Origin-Destination Employment Statistics in Partnership with the Alabama Department of Labor, Labor Market Information Division.

# 2021 Commuting Patterns

## Where People Live who Work in This County



	Count	Share
Montgomery County, AL	55,884	46.5%
Elmore County, AL	14,276	11.9%
Autauga County, AL	9,222	7.7%
Jefferson County, AL	3,728	3.1%
Lee County, AL	2,837	2.4%
Mobile County, AL	2,393	2.0%
Shelby County, AL	1,768	1.5%
Tallapoosa County, AL	1,475	1.2%
Chilton County, AL	1,452	1.2%
Madison County, AL	1,358	1.1%
All Other Locations	25,681	21.4%

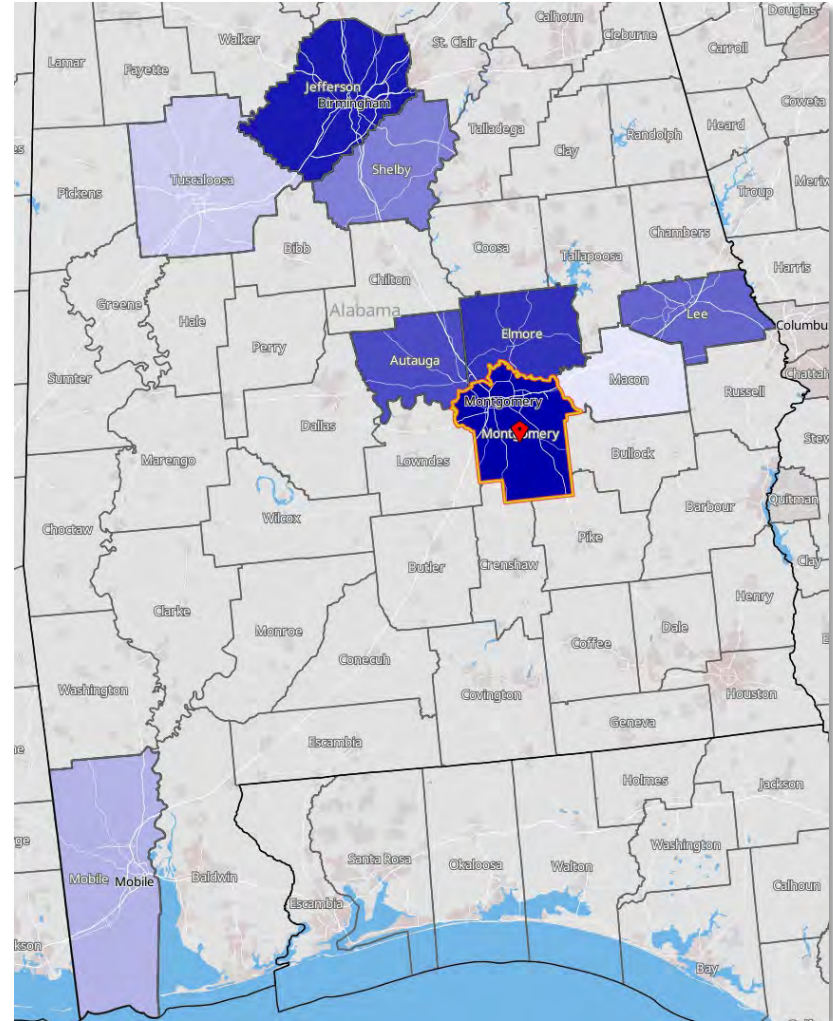
Source: U.S. Census Bureau, OnTheMap Application and LEHD Origin-Destination Employment Statistics in Partnership with the Alabama Department of Labor, Labor Market Information Division.



# 2021 Commuting Patterns

Where People Work who Live in This County

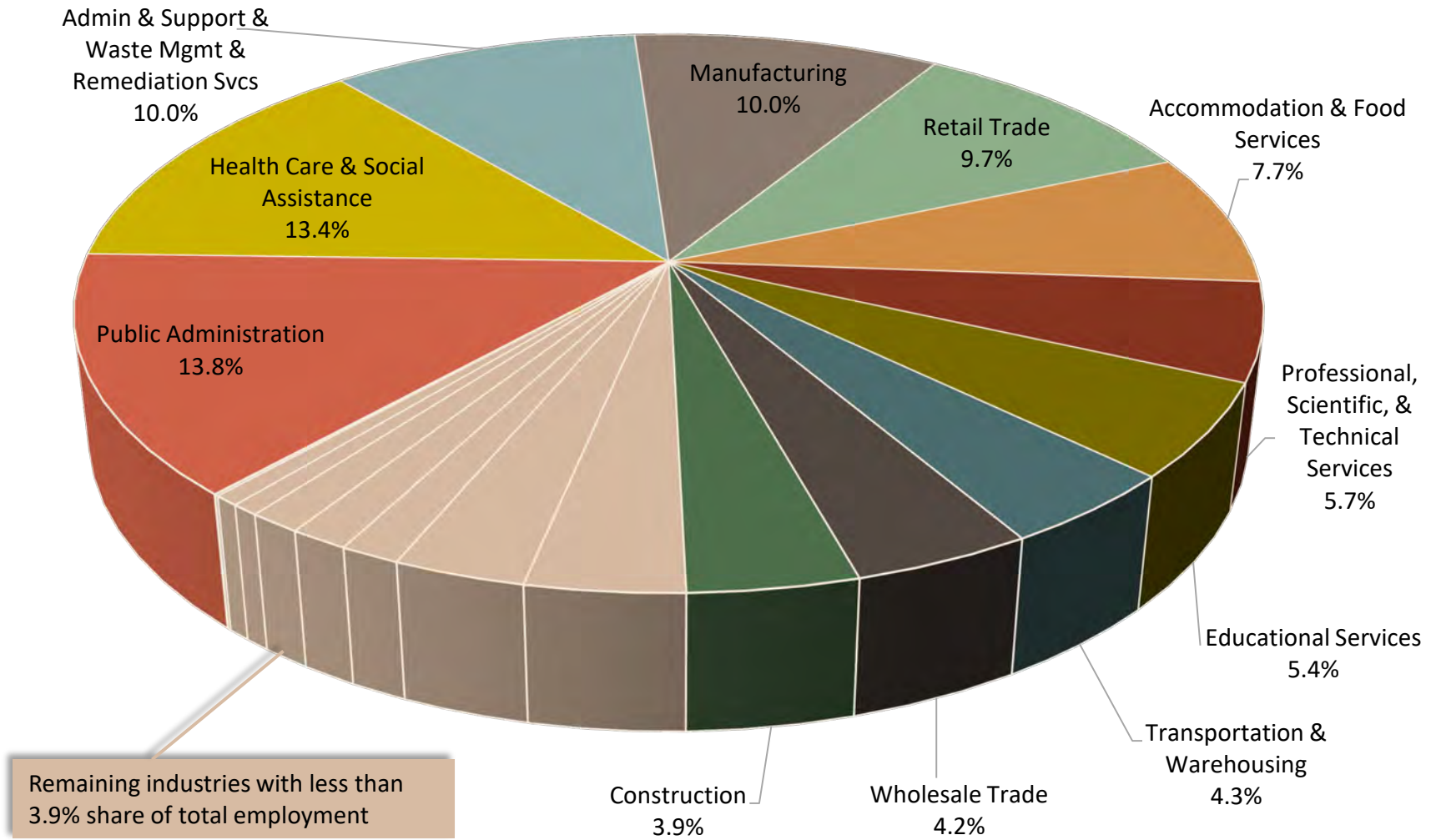
	Count	Share
Montgomery County, AL	55,884	70.1%
Jefferson County, AL	3,801	4.8%
Elmore County, AL	2,642	3.3%
Autauga County, AL	1,806	2.3%
Lee County, AL	1,383	1.7%
Shelby County, AL	1,102	1.4%
Madison County, AL	983	1.2%
Mobile County, AL	903	1.1%
Tuscaloosa County, AL	767	1.0%
Macon County, AL	733	0.9%
All Other Locations	9,668	12.1%



Source: U.S. Census Bureau, OnTheMap Application and LEHD Origin-Destination Employment Statistics in Partnership with the Alabama Department of Labor, Labor Market Information Division.

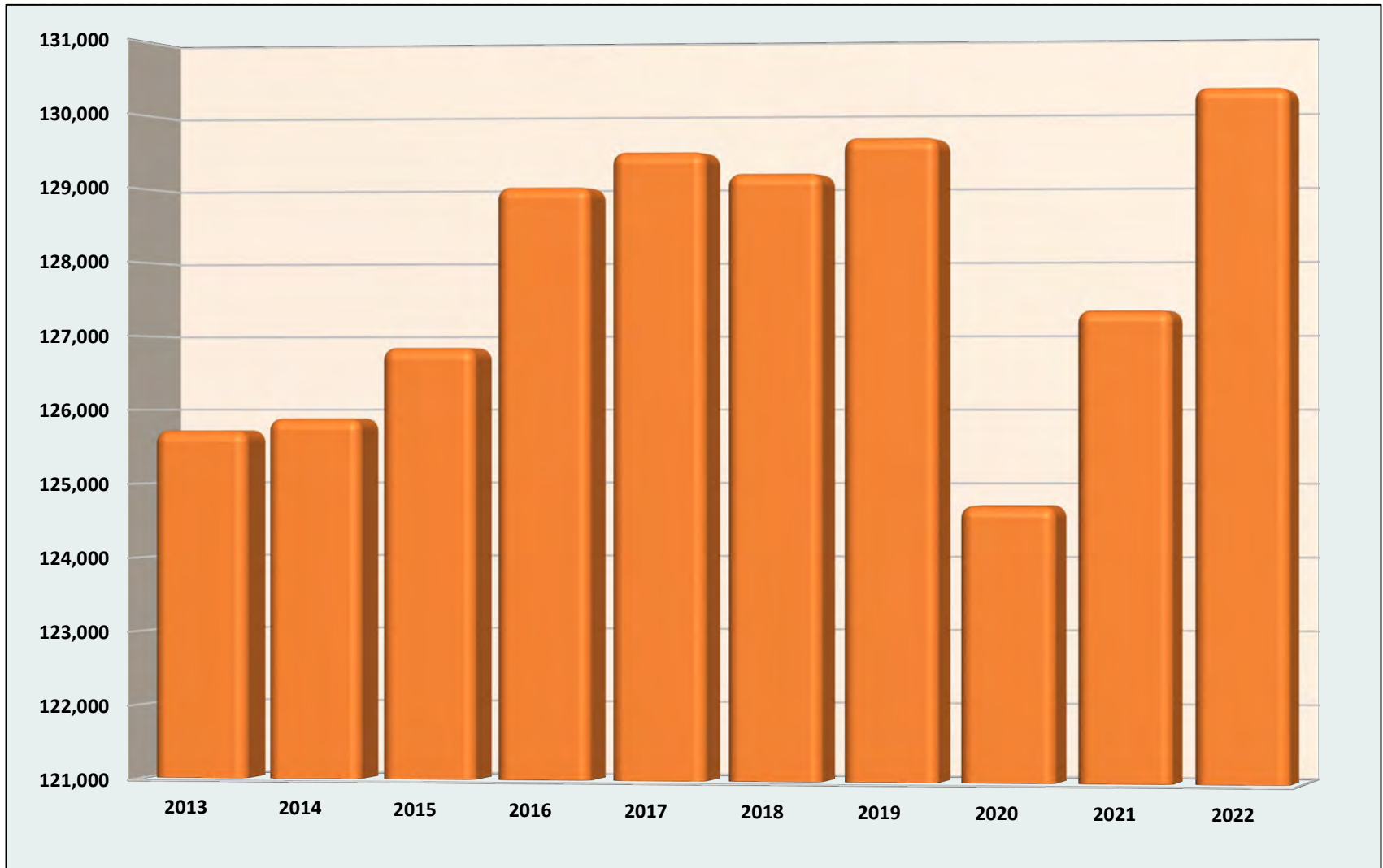
# Montgomery County Industry Distribution

## 2022



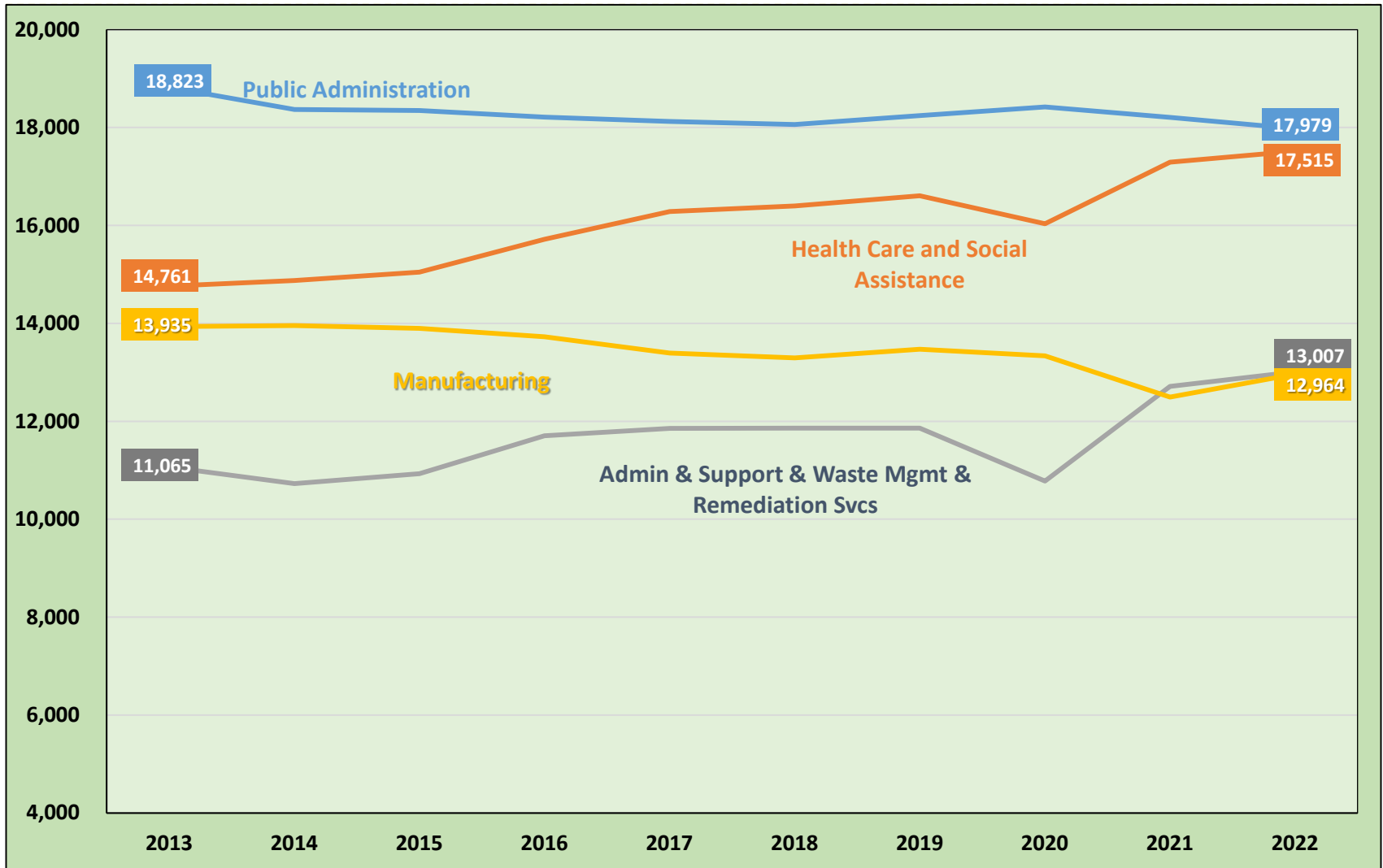
Source: Longitudinal Employer Household Dynamics program which is a partnership between the Census Bureau and the Alabama Department of Labor, Labor Market Information Division.

# Industry Total Employment Trend



Source: Longitudinal Employer Household Dynamics program which is a partnership between the Census Bureau and the Alabama Department of Labor, Labor Market Information Division.

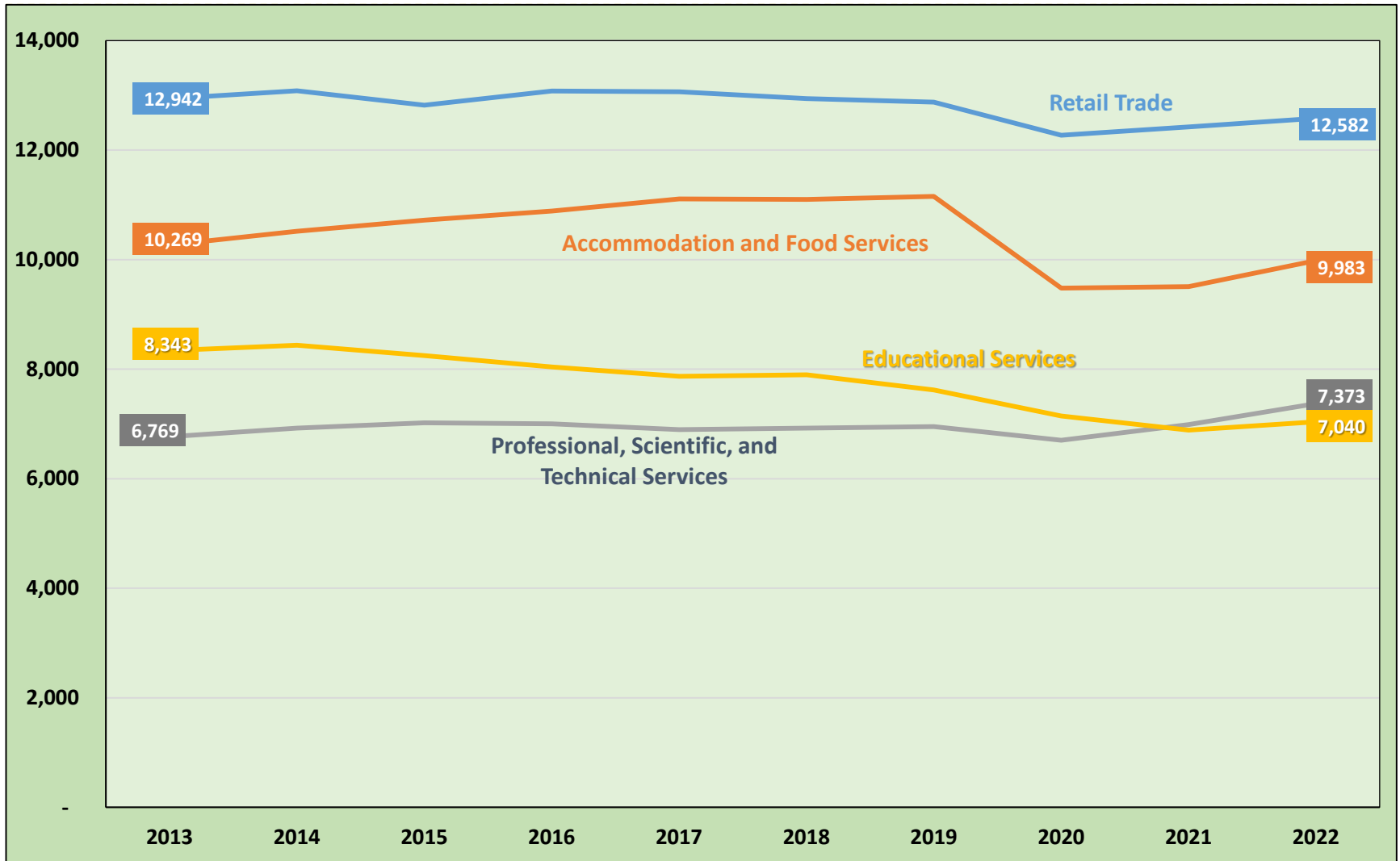
# Industry Sector Employment Trends



Source: Longitudinal Employer Household Dynamics program which is a partnership between the Census Bureau and the Alabama Department of Labor, Labor Market Information Division.

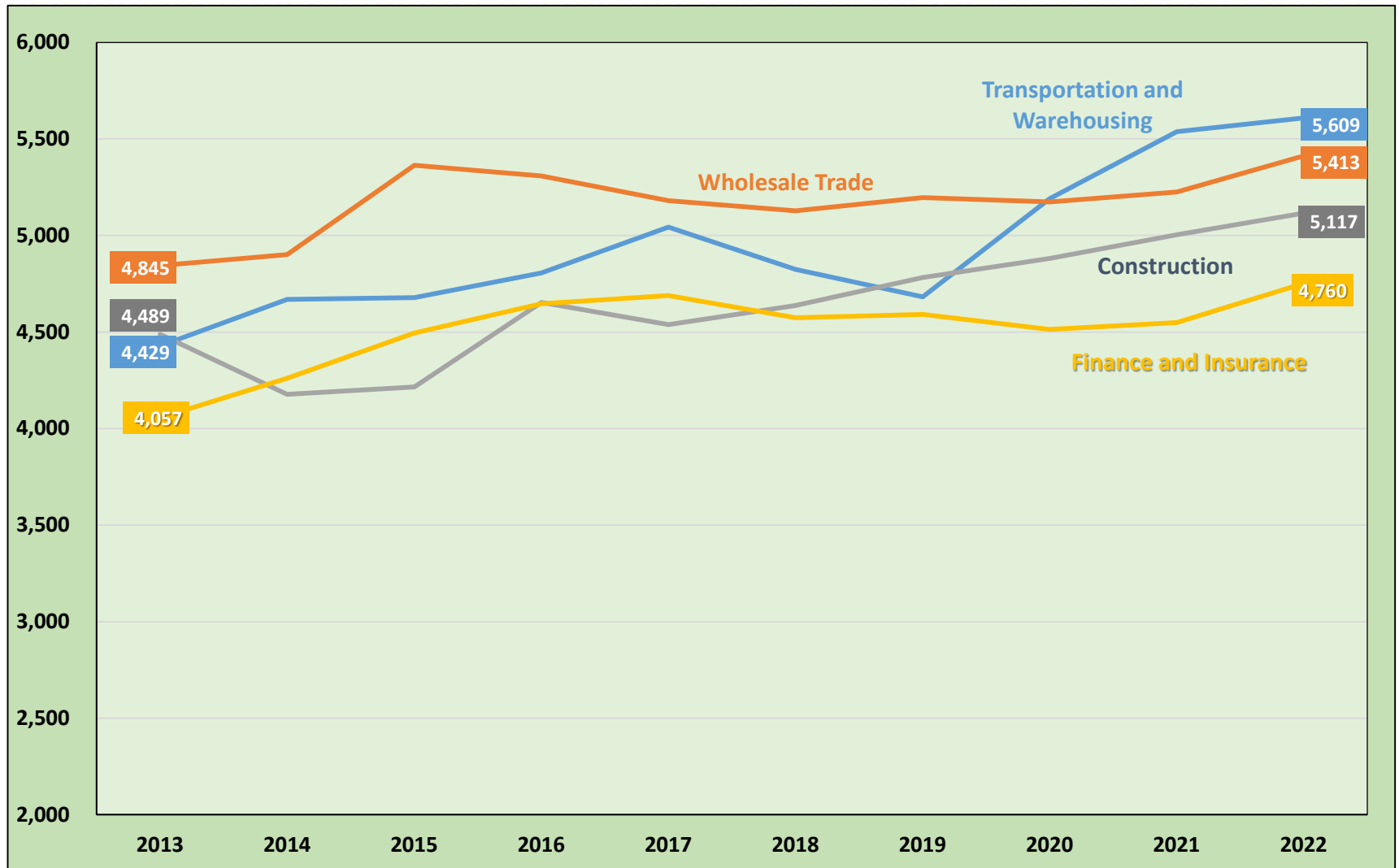


# Industry Sector Employment Trends



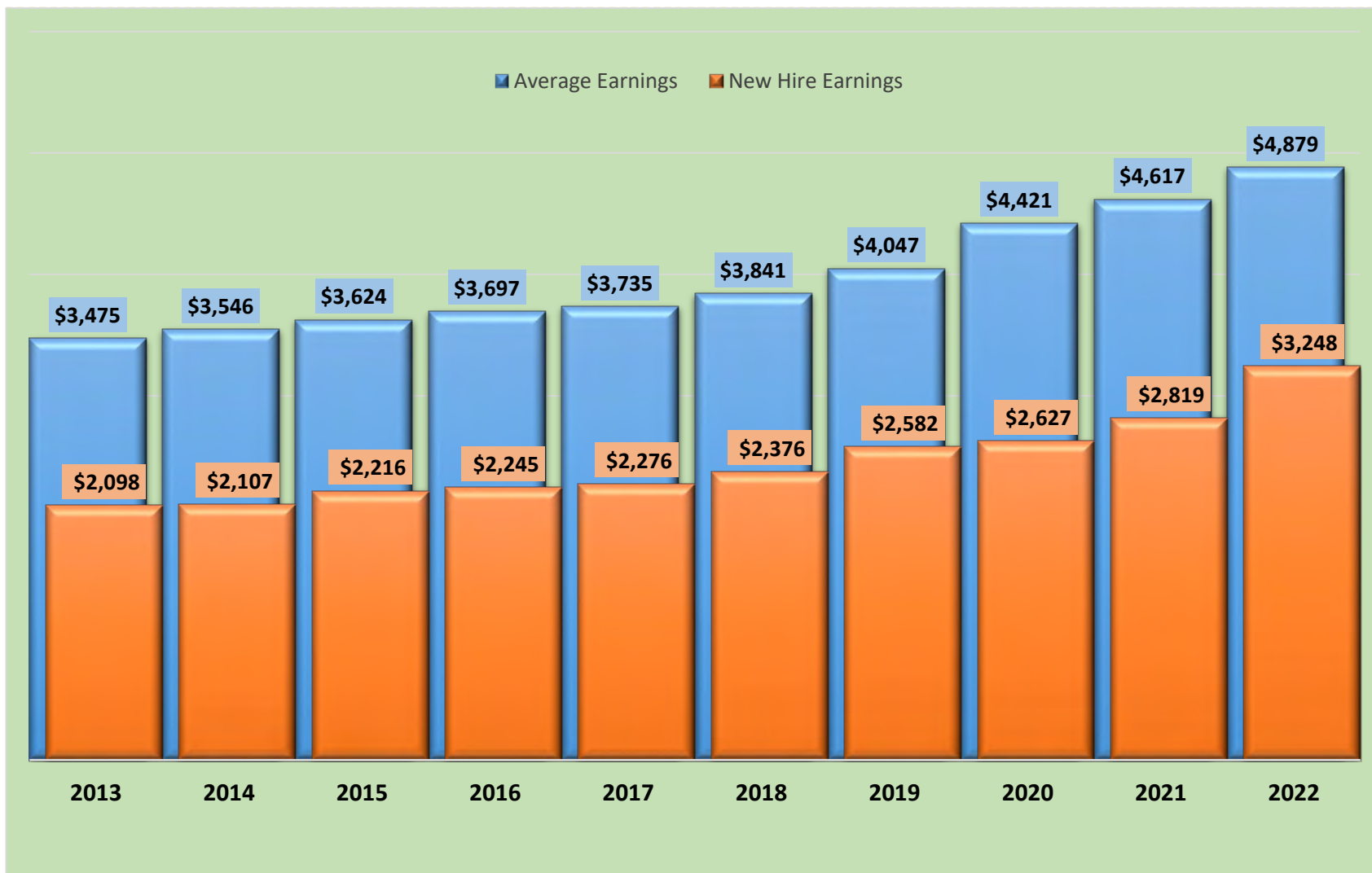
Source: Longitudinal Employer Household Dynamics program which is a partnership between the Census Bureau and the Alabama Department of Labor, Labor Market Information Division.

# Industry Sector Employment Trends



Source: Longitudinal Employer Household Dynamics program which is a partnership between the Census Bureau and the Alabama Department of Labor, Labor Market Information Division.

# Average Monthly Earnings Trend



Source: Longitudinal Employer Household Dynamics program which is a partnership between the Census Bureau and the Alabama Department of Labor, Labor Market Information Division.

# Postsecondary Education

## 2021-2022 HS Graduates Enrolled in Alabama Public Colleges

High School	HS Grads	Enrolled in AL Public Colleges	Enrolled in Remedial Course(s)				Enrollment Status	
			Math Only	English Only	Both	Total	Full Time	Part Time/ Other
Booker T Washington Magnet High School	90	58	9	0	7	16	58	0
Brewbaker Technology Magnet High School	93	57	11	1	3	15	56	1
Carver Senior High School	167	47	9	2	14	25	40	7
Childrens Center	13	0	0	0	0	0	0	0
Jefferson Davis High School	278	84	21	1	17	39	77	7
Lanier Senior High School	147	39	8	4	7	19	33	6
Lee High School	264	45	9	3	12	24	38	7
Loveless Academic Magnet Program High School	98	59	3	0	0	3	59	0
McIntyre Comprehensive Academy	19	2	0	0	0	0	1	1
Park Crossing High School	204	65	18	2	10	30	64	1
Pike Road High School	149	74	19	3	7	29	69	5

► Source: Alabama Commission on Higher Education; 2022 High School Report.

# Postsecondary Education

## Fall 2022 Undergraduate Enrollment of Students Attending Alabama Public Two-Year and Four-Year Institutions

Montgomery County		# Undergrads	# First-Time Freshman
<b>Major</b>	<b>Grand Total</b>	<b>6,520</b>	<b>1,175</b>
General Studies		598	169
Registered Nursing/Registered Nurse		515	83
Undeclared/NotReported		408	49
Business Administration and Management, General		378	81
Biology/Biological Sciences, General		299	54
Computer and Information Sciences, General		253	52
Liberal Arts and Sciences/Liberal Studies		248	35
Psychology, General		240	26
Computer Science		136	27
Criminal Justice/Safety Studies		123	13
Accounting		113	20
Exercise Science and Kinesiology		105	13
Elementary Education and Teaching		96	14
Art/Art Studies, General		93	20
Finance, General		88	7

► Source: Alabama Commission on Higher Education: Workforce Development, Potential Workforce by County.

# Postsecondary Education

## Summer 2021 thru Spring 2022 Completions of Students from Alabama Public Two-Year and Four-Year Institutions

Major	Less than 1 year	Less than 2 years	Associate	Less than 4 years	Bachelor	Post-Bachelor	Master	Post-Master	Doctoral	Montgomery Total	* State Totals
Registered Nursing/Registered Nurse	0	0	58	0	59	0	17	1	0	135	3,814
General Studies	17	0	62	0	2	0	0	0	0	81	6,052
Business Administration and Management, General	1	0	7	0	45	0	25	0	1	79	2,201
Psychology, General	0	0	0	0	58	0	2	0	0	60	836
Accounting	0	0	0	0	28	0	24	0	0	52	819
Biology/Biological Sciences, General	0	0	0	0	44	0	6	0	0	50	715
Social Work	0	0	0	0	12	0	36	0	0	48	729
Computer and Information Sciences, General	4	1	15	0	18	0	3	0	0	41	1,304
Elementary Education and Teaching	0	0	0	0	16	0	12	5	0	33	1,158
Finance, General	0	0	0	0	29	0	0	0	0	29	457
Marketing/Marketing Management, General	0	0	0	0	28	0	1	0	0	29	659
Liberal Arts and Sciences, General Studies and Humanities, Other	0	0	25	0	3	0	0	0	0	28	158
Multi-/Interdisciplinary Studies, Other	3	0	2	0	23	0	0	0	0	28	1,066
Exercise Science and Kinesiology	0	0	0	0	18	0	8	0	0	26	309
Manufacturing Engineering Technology/Technician	21	0	5	0	0	0	0	0	0	26	677

► Source: Alabama Commission on Higher Education: Workforce Development, Potential Workforce by County.

# Questions???

Alabama Department of Labor  
Labor Market Information Division

[LMI.LABOR@labor.Alabama.gov](mailto:LMI.LABOR@labor.Alabama.gov)

Phone (334) 956-7465